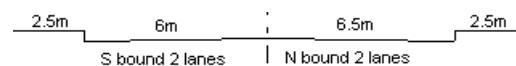


YEAR

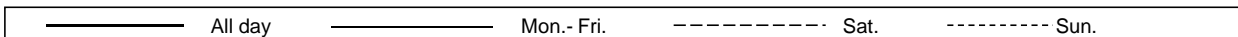
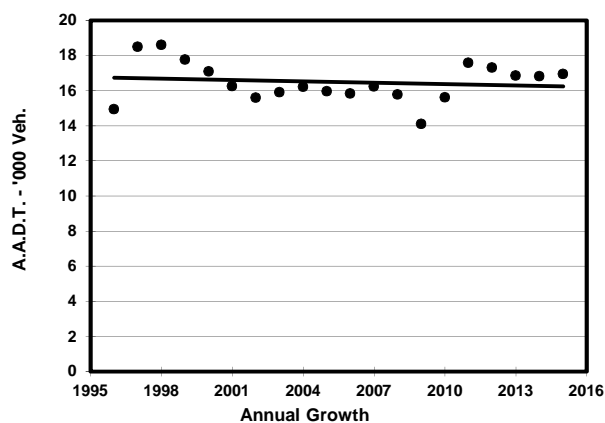
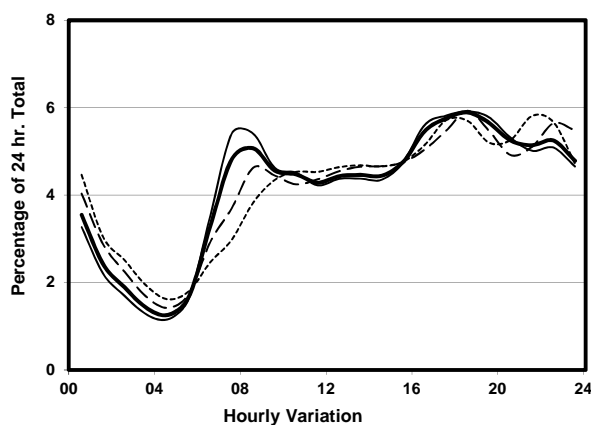
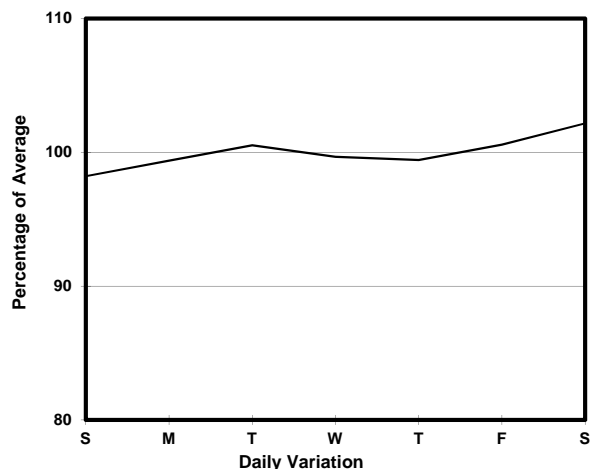
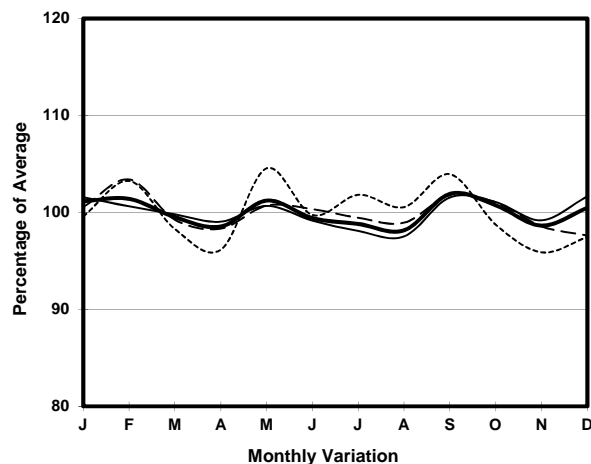
2015

LINK

HIU KWONG ST (from SAU MING RD to HIP WO ST)

CORE STATION
ROAD NETWORK
ROAD TYPE3018
MAJOR
DISTRICT DISTRIBUTOR

1. TRAFFIC FLOW VARIATION AND GROWTH



2. TRAFFIC CHARACTERISTICS (BY DIRECTION)

Parameter	All - Day	Mon. - Fri.	Sat.	Sun.
SOUTH BOUND				
A.A.D.T.	8980	8940	9280	8920
R 12 / 24 - %	57.2	57.8	55.9	55.4
R 16 / 24 - %	80.5	81.3	78.7	78.8
AM Peak Hour	0700-0800	0700-0800	0900-1000	0900-1000
One-way flow at AM peak hour	390	430	390	370
T - % (AM)	-	-	-	-
PM Peak Hour	1800-1900	1800-1900	1800-1900	1800-1900
One-way flow at PM peak hour	560	570	580	540
T - % (PM)	-	-	-	-
Prop.of commercial vehicles - 16 hr.	-	-	-	-
NORTH BOUND				
A.A.D.T.	7950	7990	8040	7720
R 12 / 24 - %	59.8	61.1	57.2	55.6
R 16 / 24 - %	78.7	79.8	76.4	75.9
AM Peak Hour	0800-0900	0800-0900	0800-0900	0900-1000
One-way flow at AM peak hour	480	520	430	350
T - % (AM)	-	-	-	-
PM Peak Hour	1700-1800	1700-1800	1800-1900	1700-1800
One-way flow at PM peak hour	440	450	450	420
T - % (PM)	-	-	-	-
Prop.of commercial vehicles - 16 hr.	-	-	-	-

3. OTHER INFORMATION AND COMMENT